

## Power Operational Amplifiers

### FEATURES

- ◆ HIGH VOLTAGE — 450V ( $\pm 225V$ )
- ◆ HIGH SLEW RATE — 1000V/ $\mu S$
- ◆ HIGH OUTPUT CURRENT — 200mA

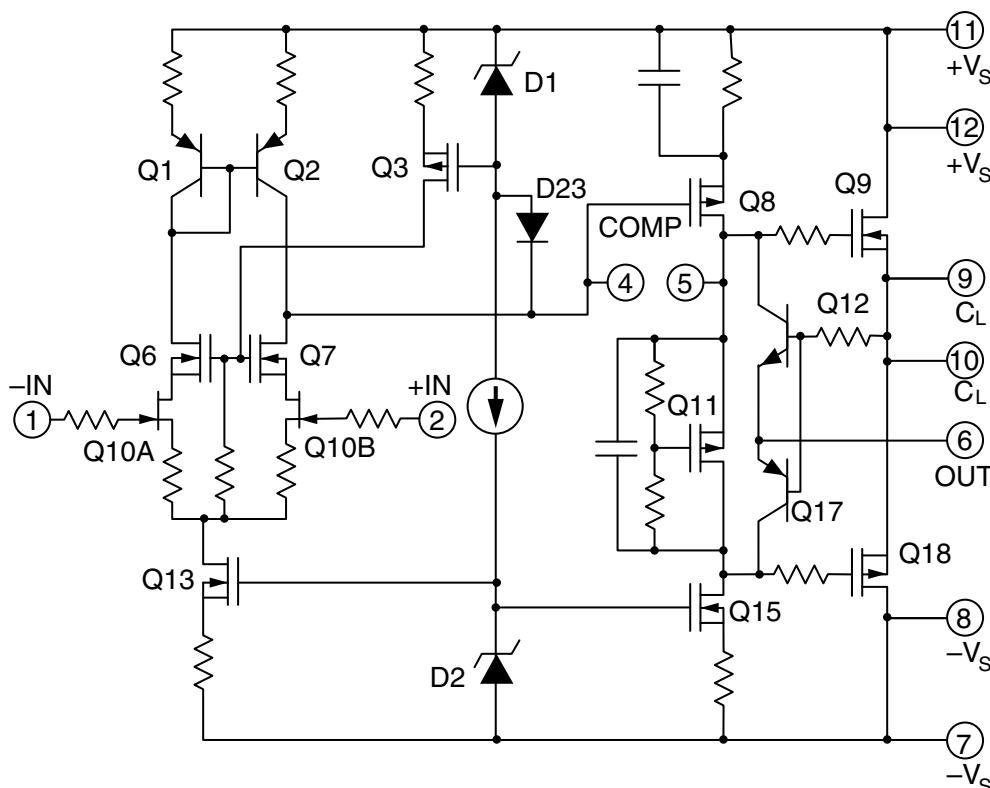
### APPLICATIONS

- ◆ HIGH VOLTAGE INSTRUMENTATION
- ◆ PIEZO TRANSDUCER EXCITATION
- ◆ PROGRAMMABLE POWER SUPPLIES UP TO 430V
- ◆ ELECTROSTATIC TRANSDUCERS & DEFLECTION

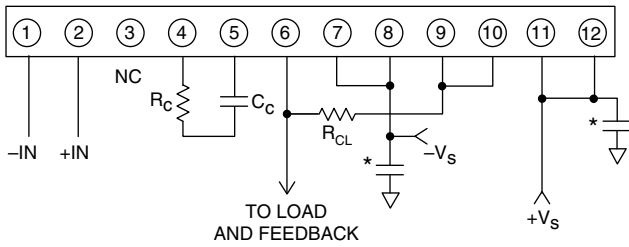
### DESCRIPTION

The PA98 is a high voltage, high power bandwidth MOSFET operational amplifier designed for output currents up to 200mA. Output voltages can swing up to  $\pm 215V$  with a dual supply and up to +440 volts with a single supply. The safe operating area (SOA) has no second breakdown limitations and can be observed with all types of loads by choosing an appropriate current limiting resistor. High accuracy is achieved with a cascode input circuit configuration. All internal biasing is referenced to a bootstrapped zener-MOSFET current source. As a result, the PA98 features an unprecedented supply range and excellent supply rejection. The MOSFET output stage is biased on for linear operation. External compensation provides user flexibility. This hybrid circuit utilizes thick film (cermet) resistors, ceramic capacitors and silicon semiconductor chips to maximize reliability, minimize size and give top performance. Ultrasonically bonded aluminum wires provide reliable interconnections at all operating temperatures. The Power SIP package is electrically isolated.

### EQUIVALENT SCHEMATIC



**EXTERNAL CONNECTIONS**



\* Bypassing required.



**PATENTED**

**12-pin SIP  
PACKAGE  
STYLE DP**

Formed leads available  
Package style EE

**1. CHARACTERISTICS AND SPECIFICATIONS**

**ABSOLUTE MAXIMUM RATINGS**

Parameter	Symbol	Min	Max	Units
SUPPLY VOLTAGE, +V <sub>s</sub> to -V <sub>s</sub>			450	V
OUTPUT CURRENT, continuous within SOA			200	mA
POWER DISSIPATION, continuous @ T <sub>c</sub> = 25°C (Note 2)			30	W
INPUT VOLTAGE, differential		-25	25	V
INPUT VOLTAGE, common mode		-V <sub>s</sub>	V <sub>s</sub>	V
TEMPERATURE, pin solder, 10s max.			260	°C
TEMPERATURE, junction (Note 2)			150	°C
TEMPERATURE RANGE, storage		-40	85	°C
OPERATING TEMPERATURE RANGE, case		-25	85	°C

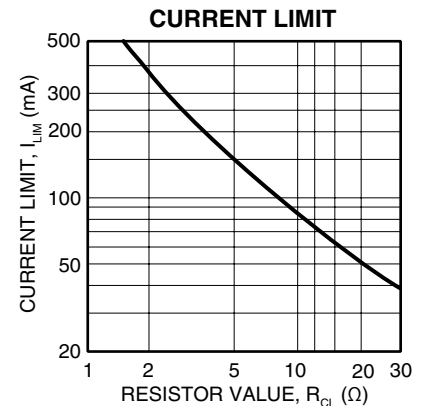
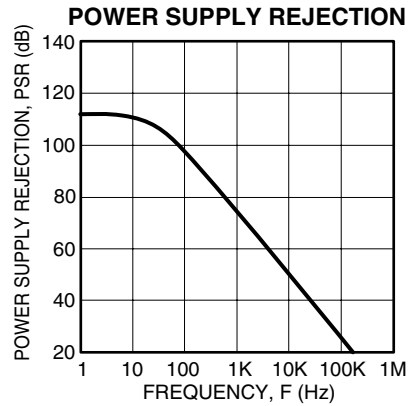
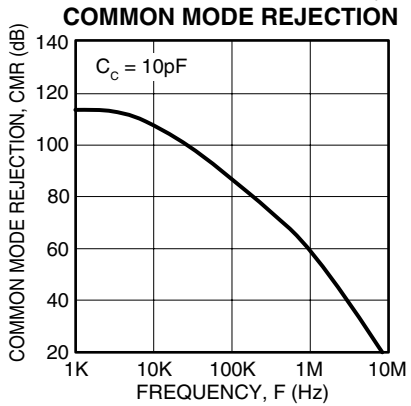
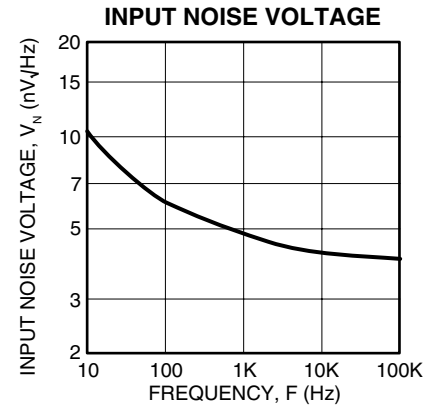
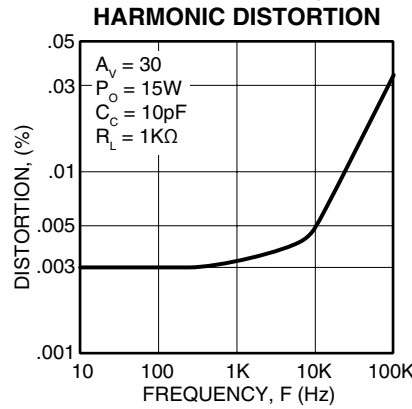
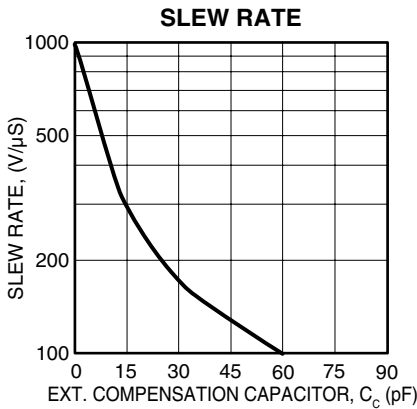
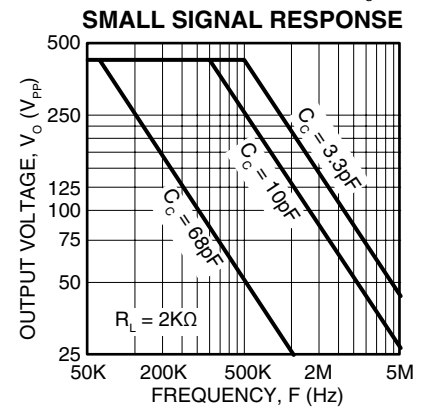
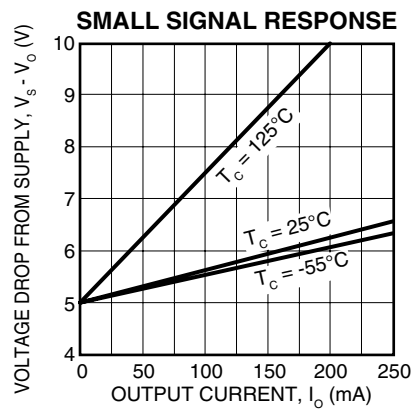
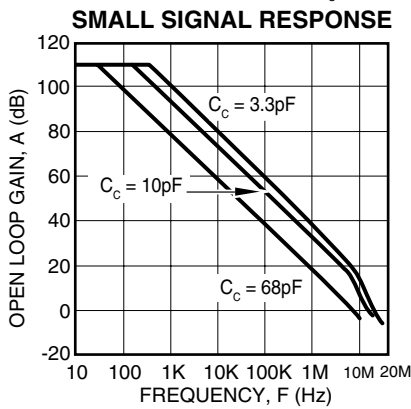
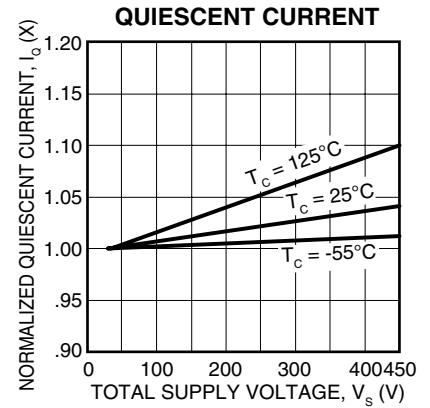
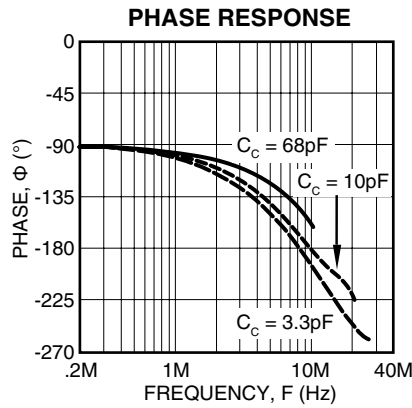
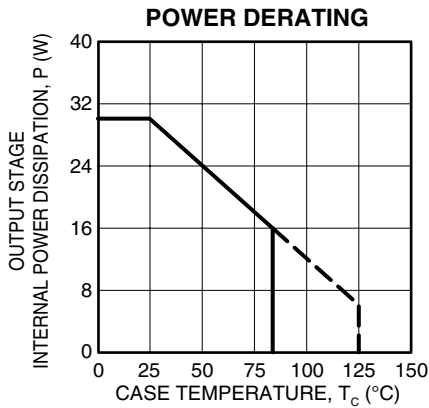
**CAUTION** The PA98 is constructed from MOSFET transistors. ESD handling procedures must be observed. The exposed substrate contains beryllia (BeO). Do not crush, machine, or subject to temperatures in excess of 850°C to avoid generating toxic fumes.

**SPECIFICATIONS**

Parameter	Test Condi- tions <sup>1</sup>	PA98			PA98A			Units
		Min	Typ	Max	Min	Typ	Max	
<b>INPUT</b>								
OFFSET VOLTAGE, initial			0.5	2		0.25	0.5	mV
OFFSET VOLTAGE vs. temp	Full temp range		10	30		5	10	µV/°C
OFFSET VOLTAGE vs. supply			3	10		*	*	µV/V
OFFSET VOLTAGE vs. time			75			*		µV/kHz
BIAS CURRENT, initial (Note 3)			5	50		3	10	pA
BIAS CURRENT, vs. supply			0.01			*		pA/V
OFFSET CURRENT, initial (Note 3)			10	100		3	30	pA
INPUT IMPEDANCE, DC			10 <sup>11</sup>			*		Ω
INPUT CAPACITANCE			4			*		pF
COMMON MODE VOLTAGE RANGE (Note 4)		±V <sub>s</sub> - 15			*			V
COMMON MODE REJECTION, DC	V <sub>CM</sub> = ±90V	90	110		*	*		dB

Parameter	Test Conditions <sup>1</sup>	PA98			PA98A			Units
		Min	Typ	Max	Min	Typ	Max	
NOISE	100kHz BW, R <sub>s</sub> = 1KΩ, C <sub>c</sub> = 10pf		1			*		μV RMS
<b>GAIN</b>								
OPEN LOOP GAIN @ 15Hz	R <sub>L</sub> = 2KΩ, C <sub>c</sub> = OPEN	96	111		*	*		dB
GAIN BANDWIDTH PRODUCT @ 1MHz	R <sub>L</sub> = 2KΩ, C <sub>c</sub> = 3.3pf		100			*		MHz
POWER BANDWIDTH	C <sub>c</sub> = 10pf		300			*		kHz
	C <sub>c</sub> = 3.3pf		500			*		kHz
PHASE MARGIN	Full temp range		60			*		°
<b>OUTPUT</b>								
VOLTAGE SWING (Note 4)	I <sub>o</sub> = ±200mA	±V <sub>s</sub> - 10	±V <sub>s</sub> - 6.5		*	*		V
VOLTAGE SWING (Note 4)	I <sub>o</sub> = ±75mA	±V <sub>s</sub> - 8.5	±V <sub>s</sub> - 6.0		*	*		V
VOLTAGE SWING (Note 4)	I <sub>o</sub> = ±20mA	±V <sub>s</sub> - 8.0	±V <sub>s</sub> - 5.5		*	*		V
CURRENT, continuous	T <sub>c</sub> = 85°C	±200				*		mA
SLEW RATE, A <sub>v</sub> = 20	C <sub>c</sub> = 10pf		400			*		V/μS
SLEW RATE, A <sub>v</sub> = 100	C <sub>c</sub> = OPEN		1000		700	*		V/μS
CAPACITIVE LOAD, A <sub>v</sub> = +1	Full temp range	470			*			pF
SETTLING TIME to 0.1%	C <sub>c</sub> = 10pf, 2V step		1			*		μS
RESISTANCE, no load	R <sub>CL</sub> = 0		50			*		Ω
<b>POWER SUPPLY</b>								
VOLTAGE (Note 6)	Full temp range	±15	±150	±225	*	*	*	V
CURRENT, quiescent			21	25		*	*	mA
<b>THERMAL</b>								
RESISTANCE, AC, junction to case (Note 5)	Full temp range, F > 60Hz			2.5			*	°C/W
RESISTANCE, DC, junction to case	Full temp range, F < 60Hz			4.2			*	°C/W
RESISTANCE, junction to air	Full temp range		30			*		°C/W
TEMPERATURE RANGE, case	Meets full range specifications	-25		+85	*		*	°C

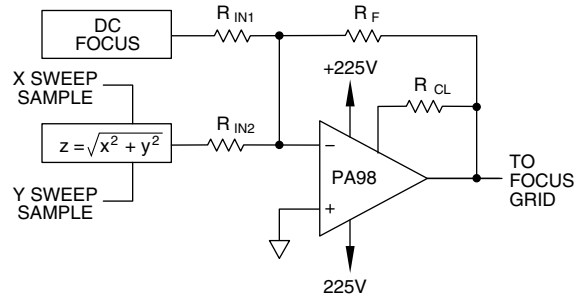
- NOTES: \*
1. Unless otherwise noted: T<sub>c</sub> = 25°C, compensation = C<sub>c</sub> = 68pF, R<sub>c</sub> = 100Ω. DC input specifications are ± value given. Power supply voltage is typical rating.
  2. Long term operation at the maximum junction temperature will result in reduced product life. Derate internal power dissipation to achieve high MTTF. Ratings apply only to output transistors. An additional 10W may be dissipated due to quiescent power.
  3. Doubles for every 10°C of temperature increase.
  4. +V<sub>s</sub> and -V<sub>s</sub> denote the positive and negative power supply rail respectively.
  5. Rating applies if the output current alternates between both output transistors at a rate faster than 60Hz.
  6. Derate max supply rating 0.625 V/°C below 25°C case. No derating needed above 25°C case.



## TYPICAL APPLICATION

### DYNAMIC FOCUSING

Dynamic focusing is the active correction of focusing voltage as a beam traverses the face of a CRT. This is necessary in high resolution flat face monitors since the distance between cathode and screen varies as the beam moves from the center of the screen to the edges. PA98 lends itself well to this function since it can be connected as a summing amplifier with inputs from the nominal focus potential and the dynamic correction. The nominal might be derived from a potentiometer, or perhaps automatic focusing circuitry might be used to generate this potential. The dynamic correction is generated from the sweep voltages by calculating the distance of the beam from the center of the display.



### PHASE COMPENSATION

Gain	C <sub>c</sub>	R <sub>c</sub>
1	68pF	100Ω
20	10pF	330Ω
100	3.3pF	0Ω

C<sub>c</sub> RATED FOR FULL SUPPLY VOLTAGE

### GENERAL

Please read Application Note 1 "General Operating Considerations" which covers stability, supplies, heat sinking, mounting, current limit, SOA interpretation, and specification interpretation. Visit [www.cirrus.com](http://www.cirrus.com) for design tools that help automate tasks such as calculations for stability, internal power dissipation, current limit; heat sink selection; Apex's complete Application Notes library; Technical Seminar Workbook; and Evaluation Kits.

### CURRENT LIMIT

For proper operation, the current limit resistor (R<sub>CL</sub>) must be connected as shown in the external connection diagram. The minimum value is 1.4 ohm, however for optimum reliability the resistor value should be set as high as possible. The value is calculated as follows; with the maximum practical value of 30 ohms.

$$R_{CL} = \frac{.7}{I_{LIM} - .016}$$

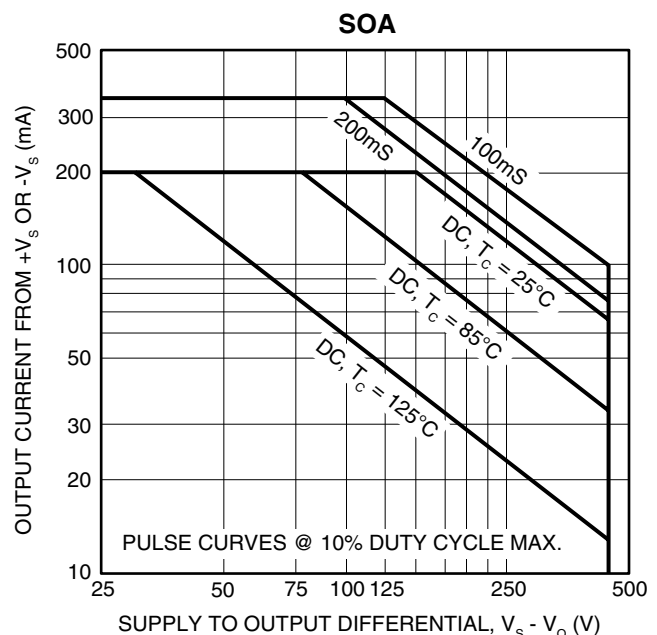
### SAFE OPERATING AREA (SOA)

The MOSFET output stage of this power operational amplifier has two distinct limitations:

1. The current handling capability of the MOSFET geometry and the wire bonds.
  2. The junction temperature of the output MOSFETs.
- NOTE: The output stage is protected against transient flyback. However, for protection against sustained, high energy flyback, external fast-recovery diodes should be used.

### SAFE OPERATING CURVES

The safe operating area curves define the maximum additional internal power dissipation the amplifier can tolerate when it produces the necessary output to drive an external load. This is not the same as the absolute maximum internal power dissipation listed elsewhere in the specification since the quiescent power dissipation is significant compared to the total.



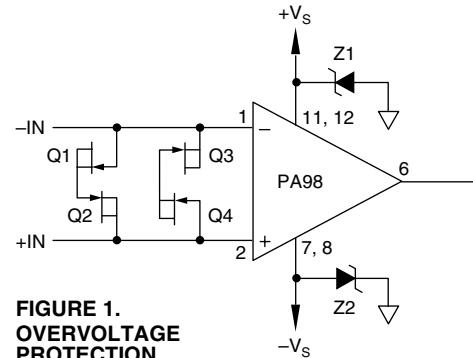
## INPUT PROTECTION

Although the PA98 can withstand differential voltages up to ±25V, additional external protection is recommended. Since the PA98 is a high speed amplifier, low leakage, low capacitance JFETs connected as diodes are recommended (e.g. 2N4416, Q1-Q4 in Figure 1). The differential input voltage will be clamped to ±1.4V. This is sufficient overdrive to produce maximum power bandwidth.

## POWER SUPPLY PROTECTION

Unidirectional zener diode transient suppressors are recommended as protection on the supply pins. The zeners clamp transients to voltages within the power supply rating and also clamp power supply reversals to ground. Whether the zeners are used or not, the system power supply should be evaluated for transient performance including power-on overshoot and power-off polarity reversals as well as line regulation.

Conditions which can cause open circuits or polarity reversals on either power supply rail should be avoided or protected against. Reversals or opens on the negative supply rail is known to induce input stage failure. Unidirectional transzors prevent this, and it is desirable that they be both electrically and physically as close to the amplifier as possible.



**FIGURE 1.**  
**OVERVOLTAGE PROTECTION**

## STABILITY

The PA98 is externally compensated and performance can be tailored to the application. Use the graphs of small signal response and power response as a guide. The compensation capacitor  $C_c$  must be rated at 500V working voltage. An NPO capacitor is recommended. The compensation network  $C_c R_c$  must be mounted closely to the amplifier pins 7 and 8 to avoid spurious oscillation.

## INTERNAL POWER DISSIPATION AND HEATSINK SELECTION

With the unique combination of high voltage and speed of the PA98, traditional formulas for heatsink selection will falsely lower the apparent power handling capability of this amplifier. To more accurately predict operating temperatures use Power Design<sup>1</sup> revision 10 or higher, or use the following procedure:

Find internal dissipation (PD) resulting from driving the load. Use Power Design or refer to Apex Applications Note 1, General Operating Considerations, paragraph 7. Find total quiescent power ( $PD_Q$ ) by multiplying 0.025A by  $V_{SS}$  (total supply voltage). Find output stage quiescent power ( $PD_{QOUT}$ ) by multiplying 0.001 by  $V_{SS}$ . Calculate a heatsink rating which will maintain the case at 85°C or lower.

$$R_{\theta SA} = \frac{T_C - T_A}{PD + PD_Q} - 0.1^\circ\text{C/W}$$

Where:  $T_C$  = maximum case temperature allowed  
 $T_A$  = maximum ambient temperature encountered

Calculate a heatsink rating which will maintain output transistor junctions at 150°C or lower.

$$R_{\theta SA} = \frac{T_J - T_A - (PD + PD_{QOUT}) * R_{\theta JC}}{PD + PD_Q} - 0.1^\circ\text{C/W}$$

Where:  $T_J$  = maximum junction temperature allowed.  
 $R_{\theta JC}$  = AC or DC thermal resistance from the specification table.  
Use the larger heatsink of these two calculations.

Power Design is an Excel spreadsheet available free from [www.cirrus.com](http://www.cirrus.com)



---

## CONTACTING CIRRUS LOGIC SUPPORT

For all Apex Precision Power product questions and inquiries, call toll free 800-546-2739 in North America.

For inquiries via email, please contact [tucson.support@cirrus.com](mailto:tucson.support@cirrus.com).

International customers can also request support by contacting their local Cirrus Logic Sales Representative.

To find the one nearest to you, go to [www.cirrus.com](http://www.cirrus.com)

---

### IMPORTANT NOTICE

Cirrus Logic, Inc. and its subsidiaries ("Cirrus") believe that the information contained in this document is accurate and reliable. However, the information is subject to change without notice and is provided "AS IS" without warranty of any kind (express or implied). Customers are advised to obtain the latest version of relevant information to verify, before placing orders, that information being relied on is current and complete. All products are sold subject to the terms and conditions of sale supplied at the time of order acknowledgment, including those pertaining to warranty, indemnification, and limitation of liability. No responsibility is assumed by Cirrus for the use of this information, including use of this information as the basis for manufacture or sale of any items, or for infringement of patents or other rights of third parties. This document is the property of Cirrus and by furnishing this information, Cirrus grants no license, express or implied under any patents, mask work rights, copyrights, trademarks, trade secrets or other intellectual property rights. Cirrus owns the copyrights associated with the information contained herein and gives consent for copies to be made of the information only for use within your organization with respect to Cirrus integrated circuits or other products of Cirrus. This consent does not extend to other copying such as copying for general distribution, advertising or promotional purposes, or for creating any work for resale.

CERTAIN APPLICATIONS USING SEMICONDUCTOR PRODUCTS MAY INVOLVE POTENTIAL RISKS OF DEATH, PERSONAL INJURY, OR SEVERE PROPERTY OR ENVIRONMENTAL DAMAGE ("CRITICAL APPLICATIONS"). CIRRUS PRODUCTS ARE NOT DESIGNED, AUTHORIZED OR WARRANTED TO BE SUITABLE FOR USE IN PRODUCTS SURGICALLY IMPLANTED INTO THE BODY, AUTOMOTIVE SAFETY OR SECURITY DEVICES, LIFE SUPPORT PRODUCTS OR OTHER CRITICAL APPLICATIONS. INCLUSION OF CIRRUS PRODUCTS IN SUCH APPLICATIONS IS UNDERSTOOD TO BE FULLY AT THE CUSTOMER'S RISK AND CIRRUS DISCLAIMS AND MAKES NO WARRANTY, EXPRESS, STATUTORY OR IMPLIED, INCLUDING THE IMPLIED WARRANTIES OF MERCHANTABILITY AND FITNESS FOR PARTICULAR PURPOSE, WITH REGARD TO ANY CIRRUS PRODUCT THAT IS USED IN SUCH A MANNER. IF THE CUSTOMER OR CUSTOMER'S CUSTOMER USES OR PERMITS THE USE OF CIRRUS PRODUCTS IN CRITICAL APPLICATIONS, CUSTOMER AGREES, BY SUCH USE, TO FULLY INDEMNIFY CIRRUS, ITS OFFICERS, DIRECTORS, EMPLOYEES, DISTRIBUTORS AND OTHER AGENTS FROM ANY AND ALL LIABILITY, INCLUDING ATTORNEYS' FEES AND COSTS, THAT MAY RESULT FROM OR ARISE IN CONNECTION WITH THESE USES.

Cirrus Logic, Cirrus, and the Cirrus Logic logo designs, Apex Precision Power, Apex and the Apex Precision Power logo designs are trademarks of Cirrus Logic, Inc. All other brand and product names in this document may be trademarks or service marks of their respective owners.